

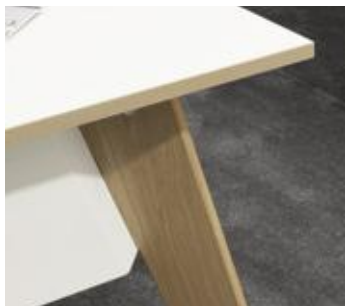
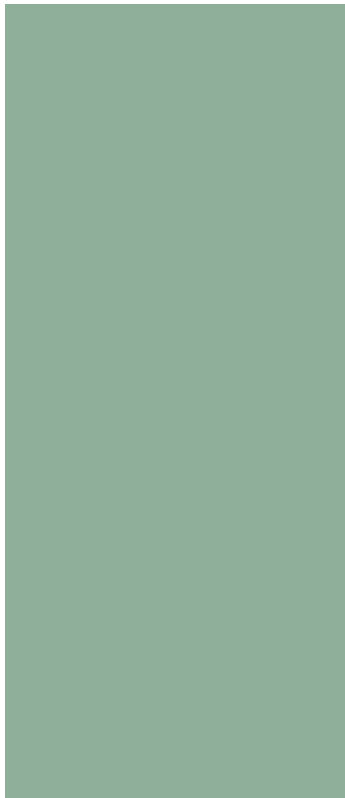
# ds | ergonomics

ds-ergonomics.com

CREATING EFFECTIVE WORKING ENVIRONMENTS



MADE IN THE UK



WORKSTATIONS & TABLES

EC4

# EC4

A stylish introduction to the modern office.

Combining the elegance and robustness of solid oak and steel, KI's EC4 collection adds a touch of nature to the modern office landscape.

With all the inherent capabilities of a workstation system, EC4 will bring a stylish, elegance to open plan offices, meeting rooms and third spaces. Its beautiful, classic design is supported by KI's reputation for intelligently engineered furniture.

Workstations and tables feature clear, unencumbered space above and below a cantilevered worksurface. The refreshing mixed material aesthetic can be extended into KI's 800 Series storage collection through the introduction of accent colours and matching solid oak feet.

Made in the UK | 25 year warranty\*

\*25 years on steel understructure, 5 years on MFC & solid oak parts





## EC4 & biophilic design

Natural analogues, such as EC4's solid oak legs and optional oak laminate detailing, act as reminders of the natural world. This indirect connection is a small component in wider biophilic design, a concept which has been shown to reduce stress, enhance creativity, clarity of thought and wellbeing.

Modern offices are frequently located in highly urbanised areas. The inclusion of biophilic elements can make a noticeable impact on a sense of satisfaction with the working environment.

# Benches & workstations

Activity: individual

Ideal for: open plan, assigned and unassigned workstations

Bringing a touch of nature to the open plan space, EC4's solid oak legs are complemented by laminate accents to create a softer, modern aesthetic.

Vertical and horizontal cable management is serviced by the elegant cable riser fitted to the intermediate legs. Optional screens add a degree of privacy and delineation of personal space, often cited as an important factor for office worker productivity and wellbeing.





# Tables

Activity: short term individual or team working  
Ideal for: meeting rooms, boardrooms, third space

Popular with office-based and remote workers alike, these spaces provide a versatile work setting away from the desk. EC4 can be configured with oversailing tops to create tables which are adept at hosting both individual and collaborative work.

From small gatherings to conference and boardrooms, the elegance of EC4 can be carried from the open plan to meeting rooms and third spaces with 4 and multiple leg options. Desktop power and data can be added and a variety of worktop shapes and sizes in numerous finish options can add extra functionality and style.





## Executive desks

Activity: individual or small meeting  
Ideal for: executive suites, cellular office

The EC4 system can be configured to create a robust table, a great statement centrepiece for the executive suite. Its clean lines and elegant legs are readily complemented by other components of the typical cellular office environment such as feature lighting, soft seating, storage and artwork.

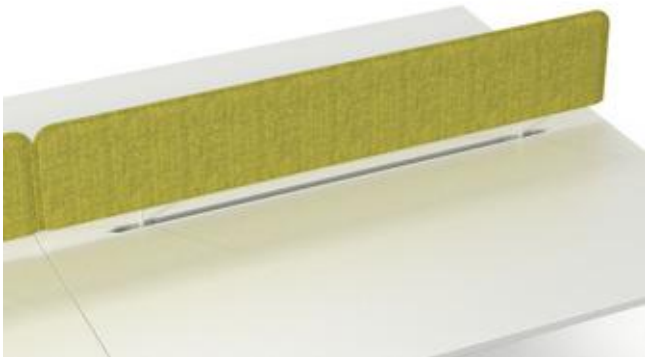


# Screens

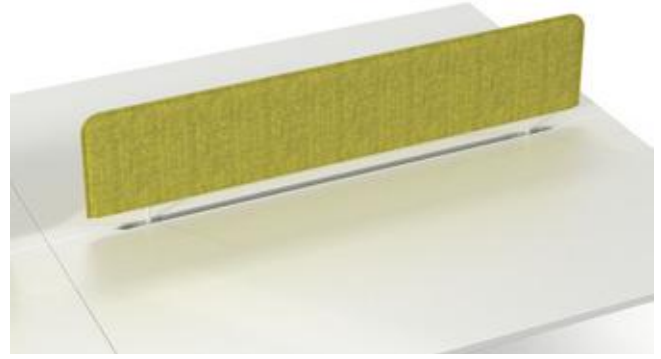
The EC4 range can be enhanced with a wide variety of screen options. From simple fabric panels, to Perspex<sup>®</sup>, or metal frames with integrated tool rails, each of these options offer a variety of aesthetic and practical benefits.

- Inset or full width screens
- Set above, at, or below worksurface level
- Side return screens
- Floor standing screens, infill and modesty panels

C Series - full width screen



C Series - inset screen



E Series - full width screen



E Series - inset screen



L Series - full width screen



L Series - inset screen

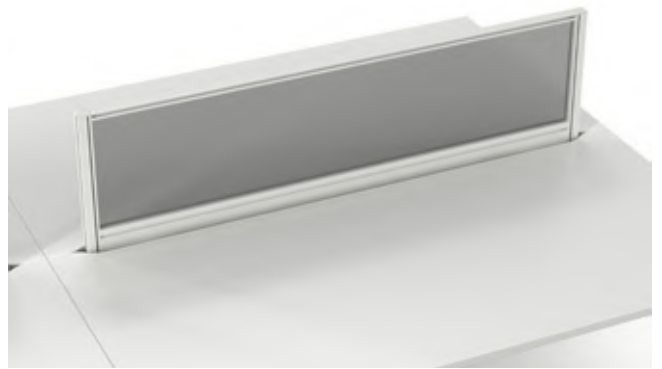




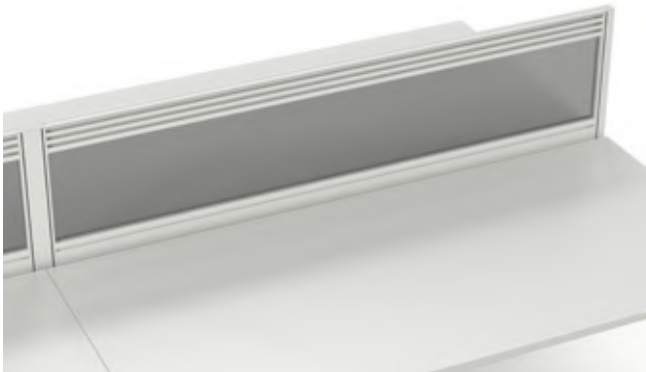
H Series - single rail full width screen



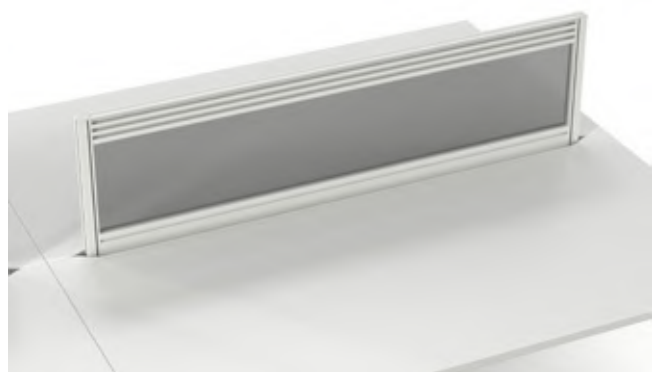
H Series - single rail inset screen



H Series - triple rail full width screen



H Series - triple rail inset screen



T Series - single rail full width screen



T Series - single rail inset screen



T Series - triple rail full width screen



T Series - triple rail inset screen



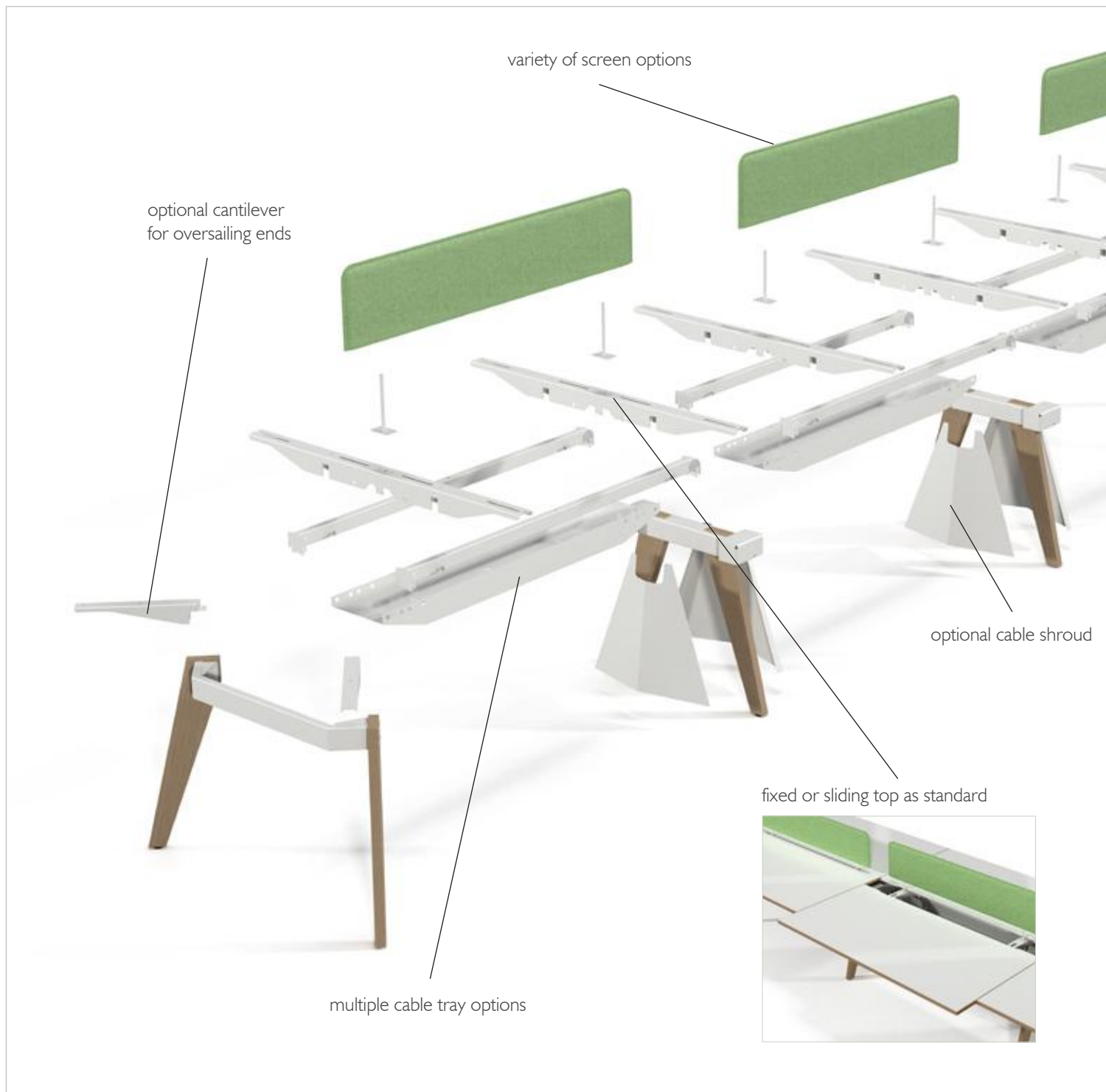
# The details

The elegant simplicity of a table, with KI's robust engineering under the bonnet

EC4 is designed and manufactured in the UK on rapid lead-times consistent with the demands of the local market. Like all KI furniture, it is produced to the highest standards in modern, highly automated factories, using the best quality materials and workmanship.

- The multi-purpose inventory of components can be configured to suit a variety of spaces and purposes
- Optional cable management and sliding tops can be integrated for enhanced functionality
- Rails and the cantilevered understructure make the construction highly robust, yet free from obstructions for the user
- Oversailing end options on back-to-back benches create clear, unencumbered space for informal gatherings and collaboration
- Optional screens can be added to create more defined individual workstations

## Back-to-back workstations



# Tables

## Small tables

Understructure option - steel connector system



## Large tables

Understructure option 1 - spigot and rail system  
(intermediate legs inline)



## Large tables

Understructure option 2 - cantilever system  
(intermediate legs inset)

