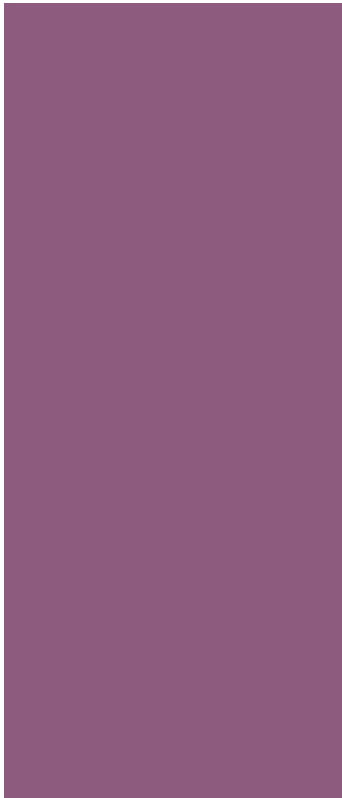




MADE IN THE UK



WORKSTATIONS & TABLES
UNITE^{SE}

Unite^{SE}

KI's most versatile workstation system

Unite^{SE} is a comprehensive bench, desk and table programme which combines simple clean design with a highly robust and flexible construction. The understructure provides a sturdy modular platform for the addition of multiple worksurface and screen options either from its standard programme or as an exercise in custom design. The programme offers benching, freestanding desks, tables and cellular office applications

- Robust, easy to assemble
- Elegant 40x60mm leg frames available in 'goalpost' or 'hoop' styles
- Versatile understructure supports wide scope of customisation options
- Seamlessly integrates with KI's storage & screening options
- Simple, retrofittable height adjustability options

Made in the UK | 25 year warranty*

*25 years on steel understructure, 5 years on MFC parts





Benching for open plan

Open plan workspaces are valued for their open vistas, enhanced communication, space efficiency and a streamlined inventory of furniture. Unite^{SE} offers numerous options for organisations that incorporate open plan benches into their workplace strategy. Back-to-back benches and 120 degree clusters are available in numerous dimensions and can be accessorised with numerous screen options, helping to create a dynamic and vibrant workspace.

- Worktops & understructures available in numerous finishes
- Screens, returns, modesty & infill panels can be added
- Intermediate legs for runs of benches
- Retrofittable height adjustment options
- Perfect integration with KI storage





Integration with storage & Breakout®

Unite^{SE} has been carefully designed to integrate seamlessly with KI's storage and Breakout® collection. This makes it easy to create an office landscape rich in diverse work settings, offering workers variety and choice to be able to find the right space for their needs.

KI's 800 Series Storage heights align perfectly with Unite^{SE} worktops and screens. They can create additional worksurfaces, space delineation, improve privacy and much more. Each storage unit comes with its own multitude of options, offering even more choice of creating unique spaces. KI's Breakout®, a unique modular third space system can be added to enhance workplace acoustic planning, helping to reduce noise and visual distractions in the open plan environment. Consisting of stackable panels, it can be specified in numerous shapes, heights and fabrics to suit any application.



Single rows & desks

For spaces that require a single desk, or a single row of desks, Unite^{SE} offers a robust and flexible solution. Whether used in meeting rooms, executive suites, along walls or in open plan spaces, these workstations are supported by Unite^{SE}'s traverse rail systems and can support numerous screening and cable management options. Left or right hand returns can be added to create more defined and spacious work surfaces.

- Worktops & understructures available in numerous finishes
- Screens, returns, modesty & infill panels can be added
- Intermediate legs available for single rows
- Height adjustability options
- Perfect integration with KI storage





Unite^{SE} for meeting rooms & cellular offices

Unite^{SE} can be enhanced with integrated storage, infill and modesty panels to create an elegant executive environment, whilst simultaneously ensuring continuity of design between the cellular environment and the open plan space beyond.

Dropdown & meeting tables

The uninterrupted worksurfaces supported by Unite^{SE}'s robust understructure create the perfect tables for dropdown zones and meeting rooms. Cable managed for ease of use, they can be specified with oversailing tops to create extra, uncluttered space beneath the surface. Their versatility facilitates a consistent and harmonious design aesthetic with other parts of the office which are furnished with Unite^{SE} desks & benches.

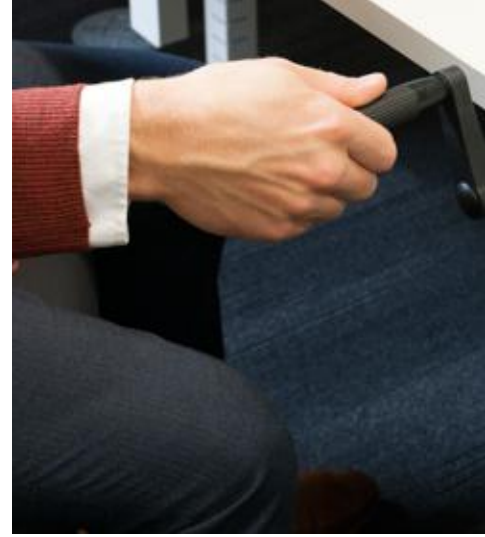




Height adjustability

Unite^{SE}'s crank height adjustable cassette kits can be installed or retro-fitted at any position on a double row rectangular bench, allowing the worktop to become height adjustable from 740mm to 1005mm.

To install, simply remove the worktop and front rail and fit the cassette onto the existing connecting rail and connecting spigot on the leg. For full powered sit-stand workstations, please refer to our Work2 Sit-Stand range.





A simpler alternative to the crank height adjustment kit is the height adjustable rail kit. Individual worksurfaces within a multiple position bench structure can be raised in height by up to 80mm (finished worksurface height 820mm) in 20mm increments by means of a simple pin height rail adaptor bracket.

The rail adaptor bracket can be specified at the manufacturing stage, or easily installed at any time in the future. The design of the components means that the adjoining workstations do not need to be dismantled during a retrofit. The workstation can be easily reset to standard height if required.

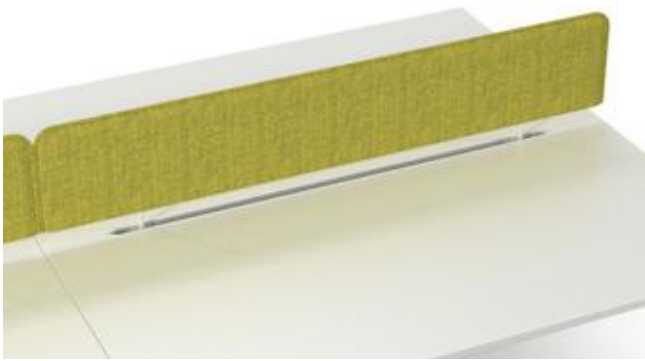
A telescopic front rail is used to replace the height adjustable rail when not required. It allows for installation without the need to dismantle the bench.

Screens

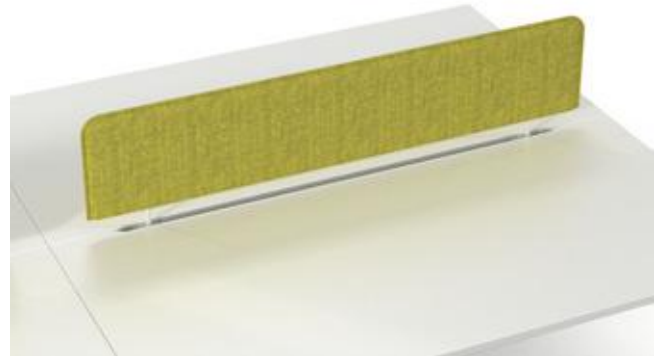
The Unite^{SE} range can be enhanced with a wide variety of screen options. From simple fabric panels, to Perspex[®], or metal frames with integrated tool rails, each of these options offer a variety of aesthetic and practical benefits.

- Inset or full width screens
- Set above, at, or below worksurface level
- Side return screens
- Floor standing screens, infill and modesty panels

C Series - full width screen



C Series - inset screen



E Series - full width screen



E Series - inset screen



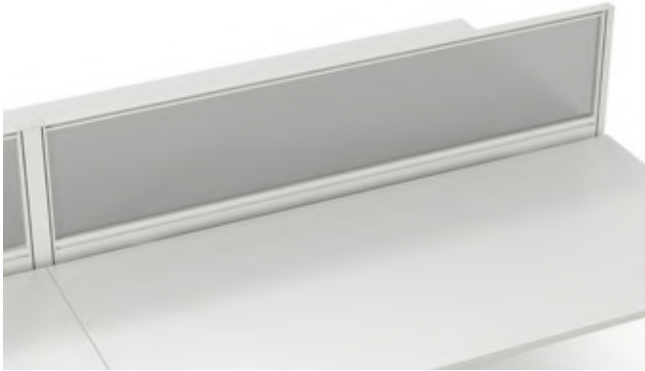
L Series - full width screen



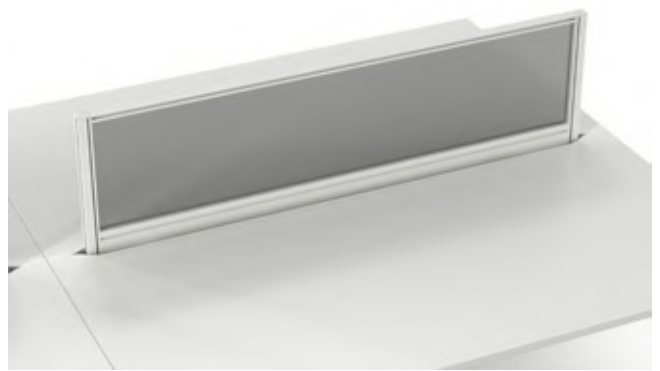
L Series - inset screen



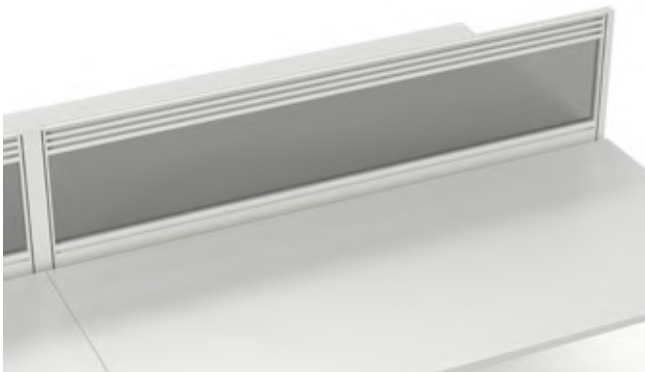
H Series - single rail full width screen



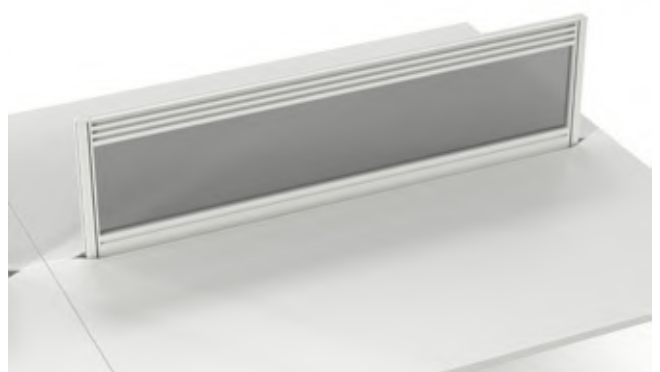
H Series - single rail inset screen



H Series - triple rail full width screen



H Series - triple rail inset screen



T Series - single rail full width screen



T Series - single rail inset screen



T Series - triple rail full width screen



T Series - triple rail inset screen



The details

At the core of the intelligent and robust design of Unite^{SE} workstations is a low yet highly flexible inventory

The understructure built from rigid box section powder coated steel, is assembled first. Screens, cable management, CPU holders and monitor arms are then added, enabling IT and electrical works to be easily accessible before the worksurfaces and accessories are fitted. High quality mechanical fixings within every element of the structure, guarantee the strength and stability of the furniture throughout the life of the product.

Cable Management

- Vertical cable access is either via an easily accessible conduit within the intermediate leg frame, or through flexible plastic umbilical risers which can be fitted to any point along the horizontal cable management
- A shallow horizontal cable tray or the option of a deep vertical cable tie tray, both of which are easily accessible and interchangeable
- A sliding top option offers instant access to the horizontal cable tray where there is generous space for power and data outlets and transformers. Monitor arms and power/data outlets can be fixed to either the steel understructure or the bottom frame of the desk screen by means of specially designed mounting brackets.

various screen options available

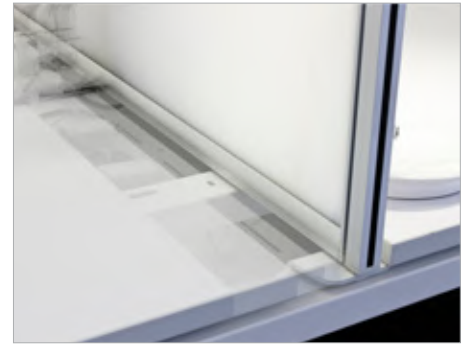
end of bench meeting extensions



standard goalpost end legs
or hoop leg option available

CPU holders mount directly to
the understructure

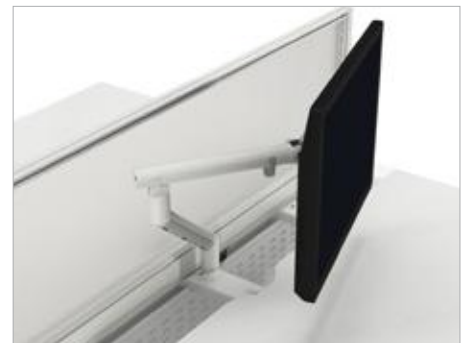
optional sliding tops



monitor arms can be mounted directly to the underframe, as illustrated here, or to the screens or worktop:



slatwall mounted screen arm



understructure mounted screen arm



worktop mounted screen arm

two cable management options:
- standard shallow tray
- high capacity zip-tie cable tray

vertical cable tray for immediate leg

